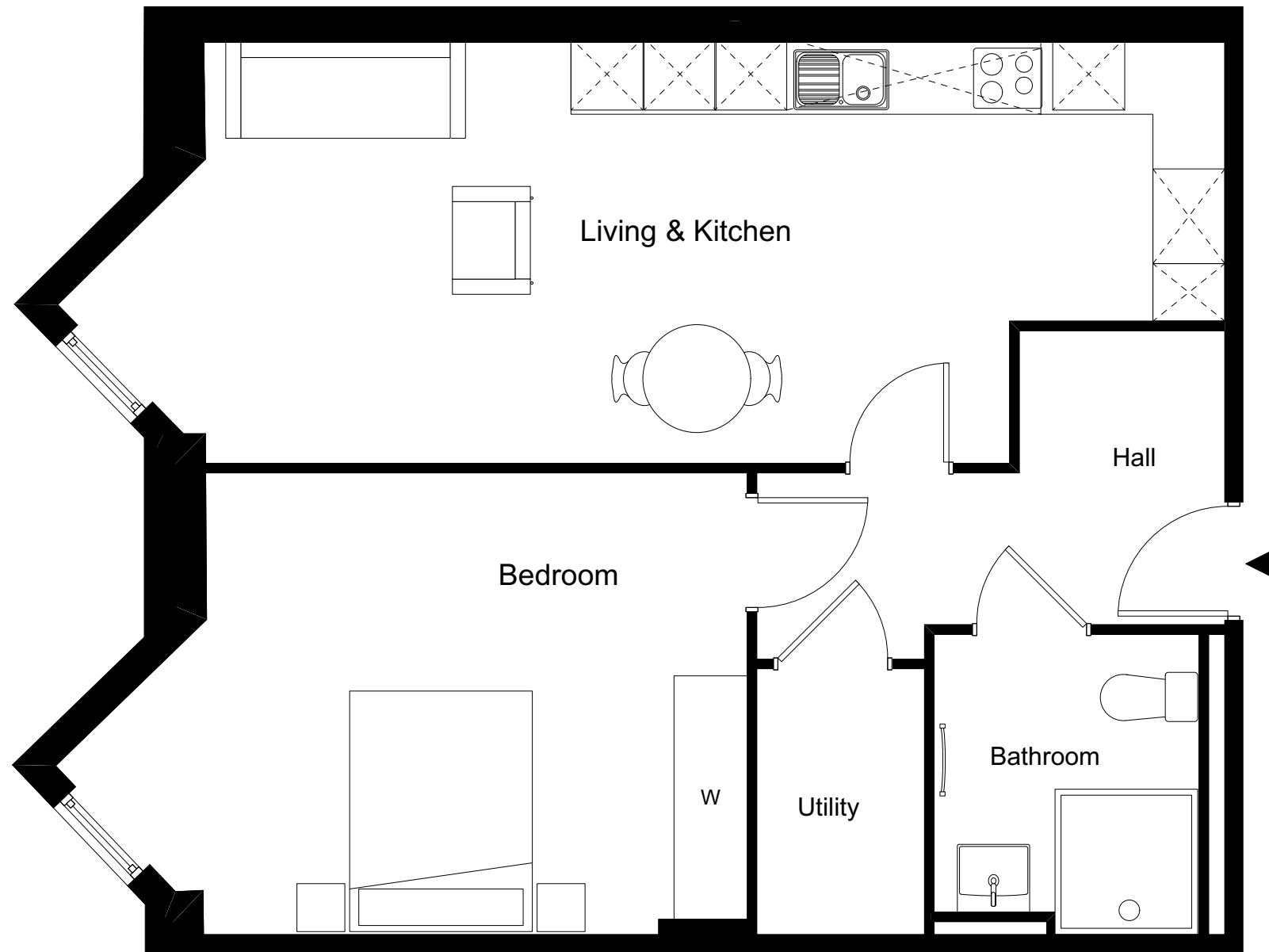


ONE FOX LANE
PALMERS GREEN, LONDON



DOMINVS
GROUP

A DEVELOPMENT BY
DOMINVS GROUP
RESIDENTIAL



1 BEDROOM APARTMENT 1.6 / 7

Total Gross Internal Area = 65.8m² / 708 sq. ft

Bedroom = 5.7 x 3.8 m / 18.7 x 12.5 ft

Living/Kitchen = 9.7 x 3.5 m / 31.8 x 11.5 ft

Key
Cupd = Cupboard
W = Wardrobe
U = Utility cupboard

Note
Measurements are the maximum room dimensions.
Floor layouts are subject to change at any time
These drawings are for Marketing purposes only