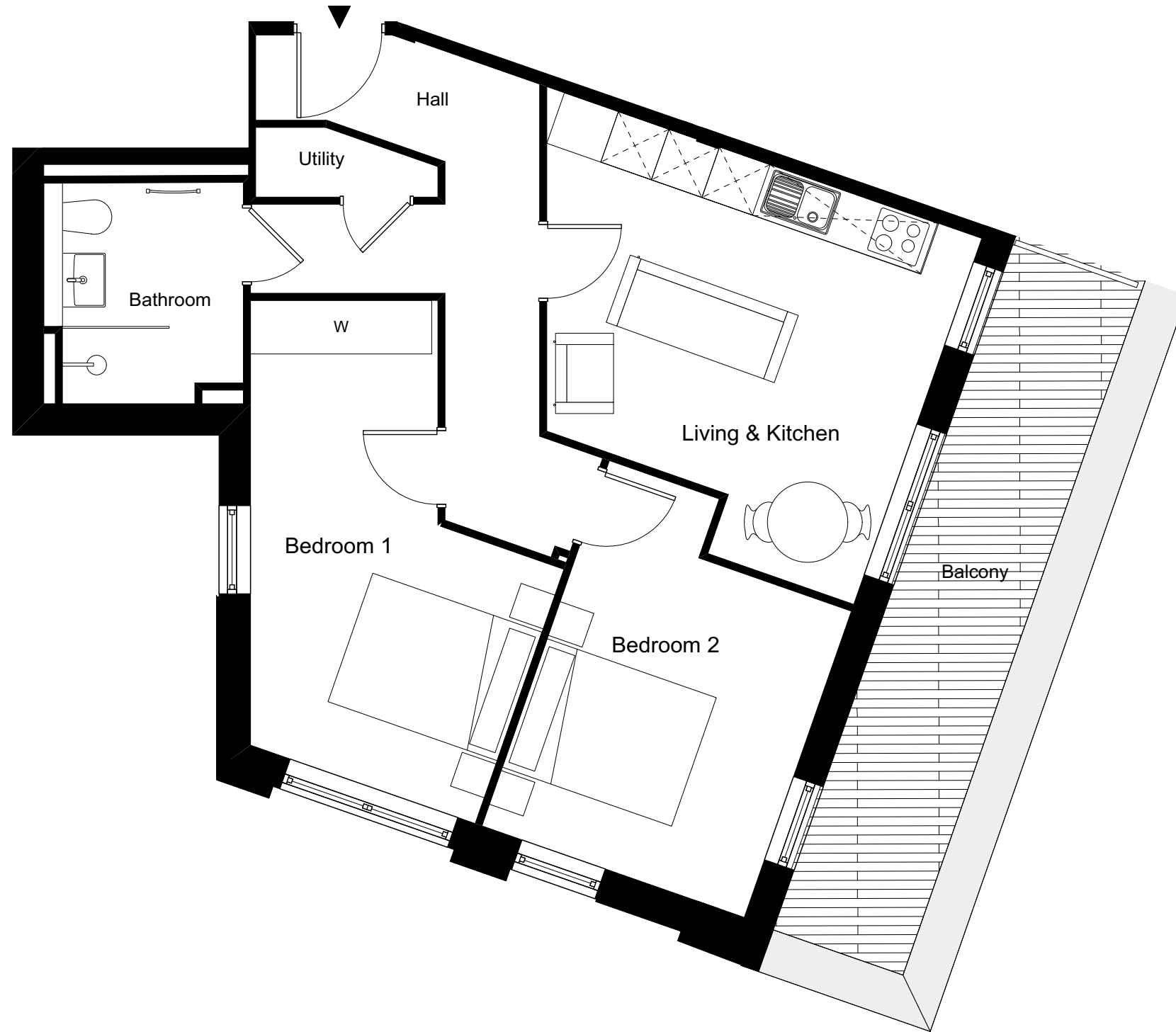


ONE FOX LANE  
PALMERS GREEN, LONDON



**2 BEDROOM APARTMENT 4.6 / 55**

Total Gross Internal Area = 63.6 m<sup>2</sup> / 685 sq. ft

Bedroom 1 = 5.4 x 3.5 m / 17.7 x 11.5 ft

Bedroom 2 = 4.3 x 3.1 m / 14.1 x 10.1 ft

Living/Kitchen = 4.9 x 3.6 m / 16 x 11.8 ft

**Key**

Cupd = Cupboard

W = Wardrobe

U = Utility cupboard

**Note**

Measurements are the maximum room dimensions.  
Floor layouts are subject to change at any time  
These drawings are for Marketing purposes only



DOMINVS  
GROUP

A DEVELOPMENT BY  
**DOMINVS GROUP**  
RESIDENTIAL