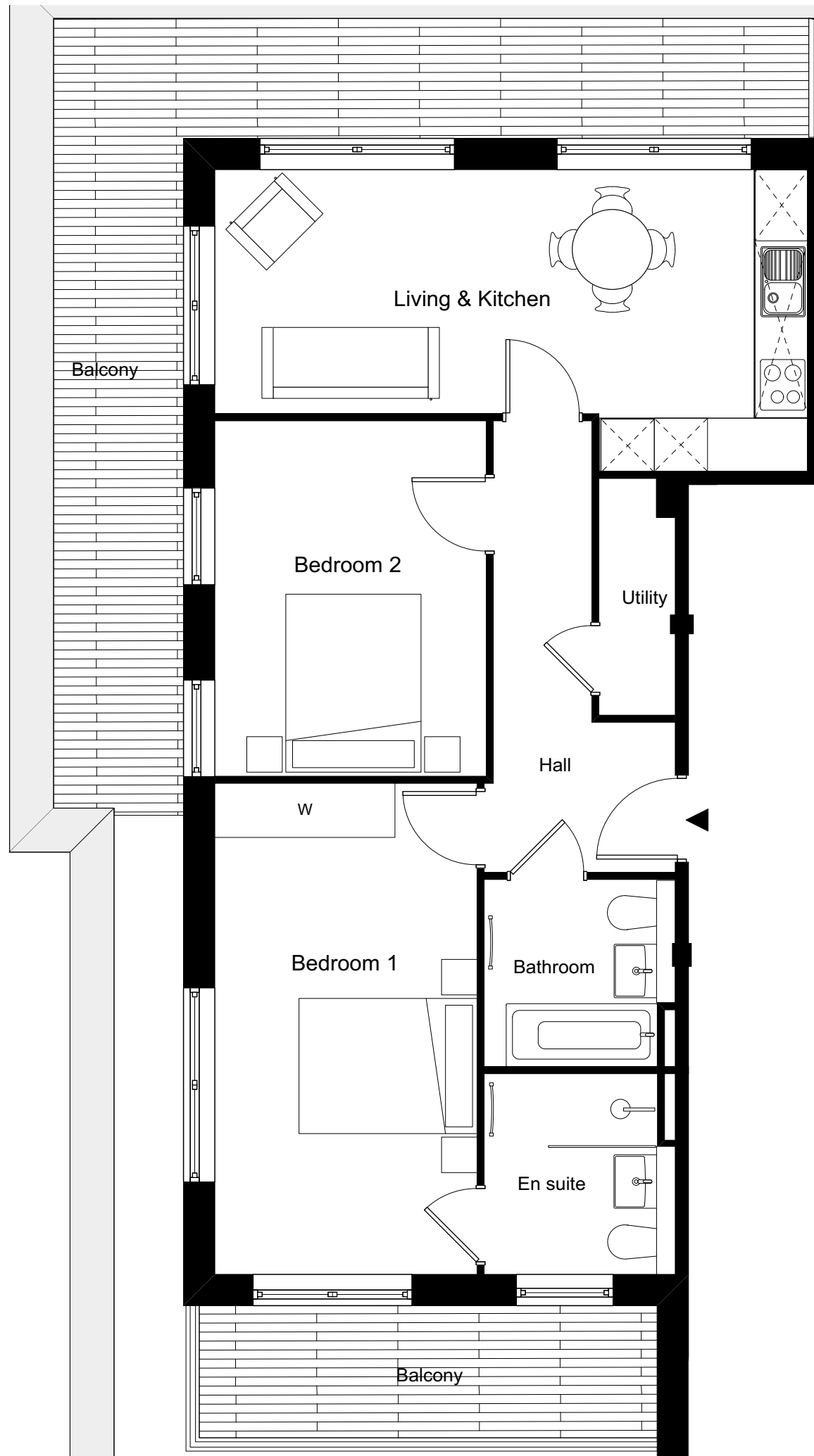


ONE FOX LANE
PALMERS GREEN, LONDON



DOMINVS
GROUP

A DEVELOPMENT BY
DOMINVS GROUP
RESIDENTIAL



2 BEDROOM APARTMENT 4.3 / 52

Total Gross Internal Area = 69.2 m² / 745 sq. ft

Bedroom 1 = 5.5 x 3.0 m / 18 x 9.8 ft

Bedroom 2 = 4.0 x 3.1 m / 13.1 x 10.1 ft

Living/Kitchen = 6.7 x 3.4 m / 22 x 11.1 ft

Key

Cupd = Cupboard

W = Wardrobe

U = Utility cupboard

Note

Measurements are the maximum room dimensions.
Floor layouts are subject to change at any time
These drawings are for Marketing purposes only