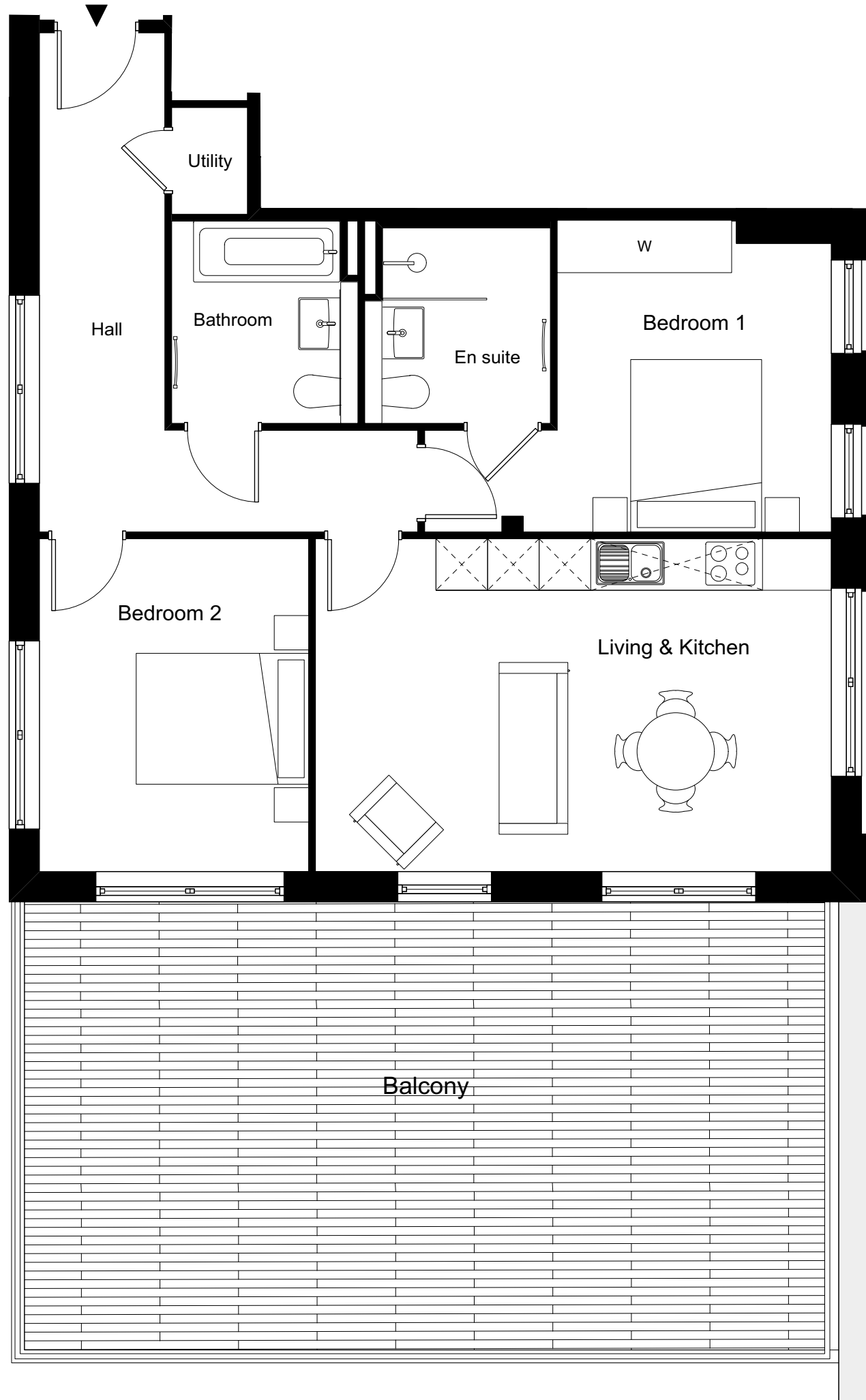


ONE FOX LANE  
PALMERS GREEN, LONDON



DOMINVS  
GROUP

A DEVELOPMENT BY  
DOMINVS GROUP  
RESIDENTIAL



**2 BEDROOM APARTMENT 4.1 51**

Total Gross Internal Area = 74 m<sup>2</sup> / 796 sq. ft

Bedroom 1 = 3.5 x 3.2 m / 11.4 x 10.5 ft

Bedroom 2 = 4.0 x 3.1 m / 13.1 x 10.1 ft

Living/Kitchen = 6.1 x 3.9 m / 20 x 12.8 ft

**Key**

Cupd = Cupboard

W = Wardrobe

U = Utility cupboard

**Note**

Measurements are the maximum room dimensions.  
Floor layouts are subject to change at any time  
These drawings are for Marketing purposes only