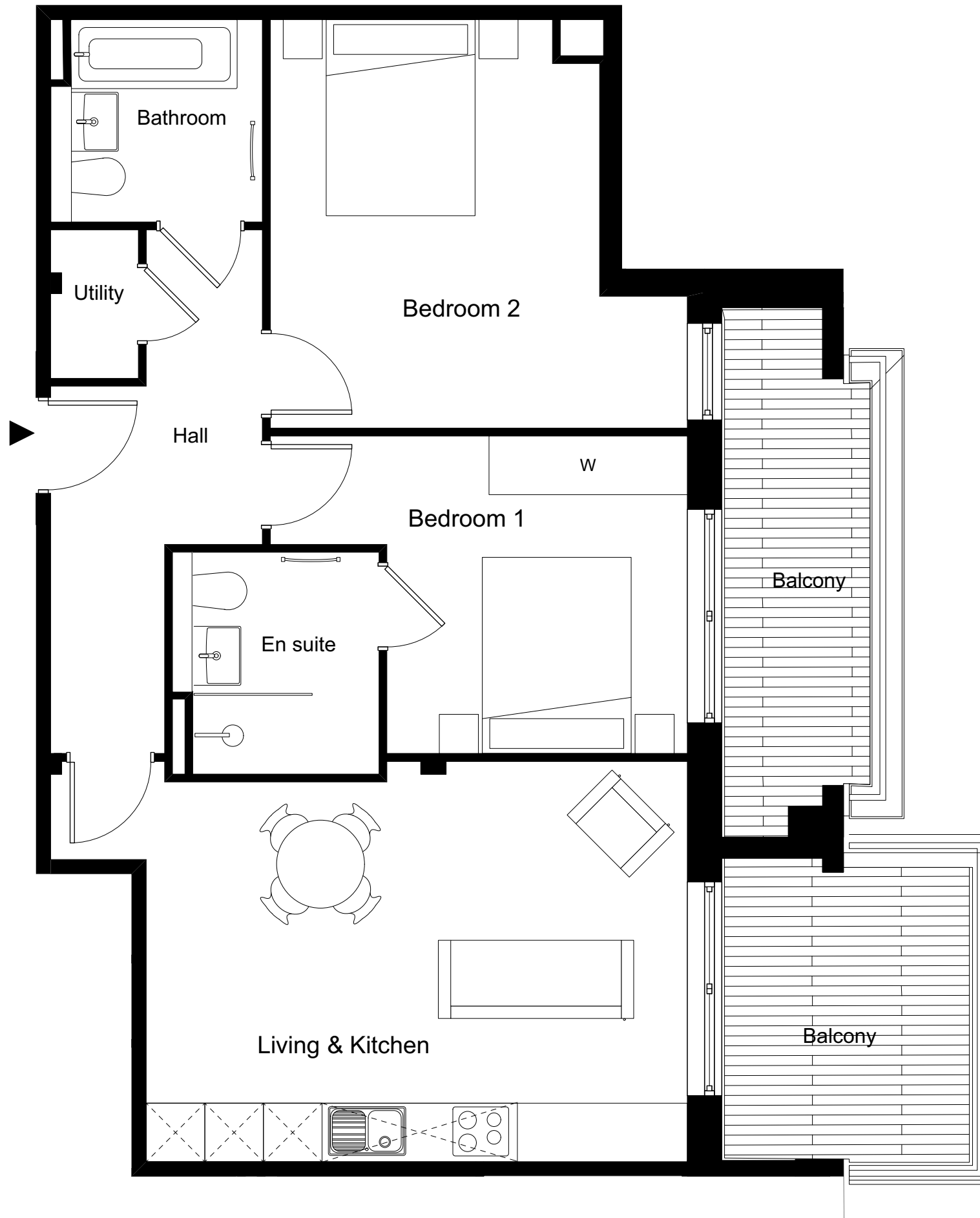


ONE FOX LANE
PALMERS GREEN, LONDON



2 BEDROOM APARTMENT 4.2 / 50

Total Gross Internal Area = 70.5 m² / 759 sq. ft

Bedroom 1 = 4.2 x 3.3 m / 13.8 x 10.8 ft

Bedroom 2 = 4.1 x 3.4 m / 13.4 x 11.1 ft

Living/Kitchen = 5.5 x 4.1 m / 18 x 13.4 ft

Key

Cupd = Cupboard

W = Wardrobe

U = Utility cupboard

Note

Measurements are the maximum room dimensions.
Floor layouts are subject to change at any time
These drawings are for Marketing purposes only



DOMINVS
GROUP

A DEVELOPMENT BY
DOMINVS GROUP
RESIDENTIAL