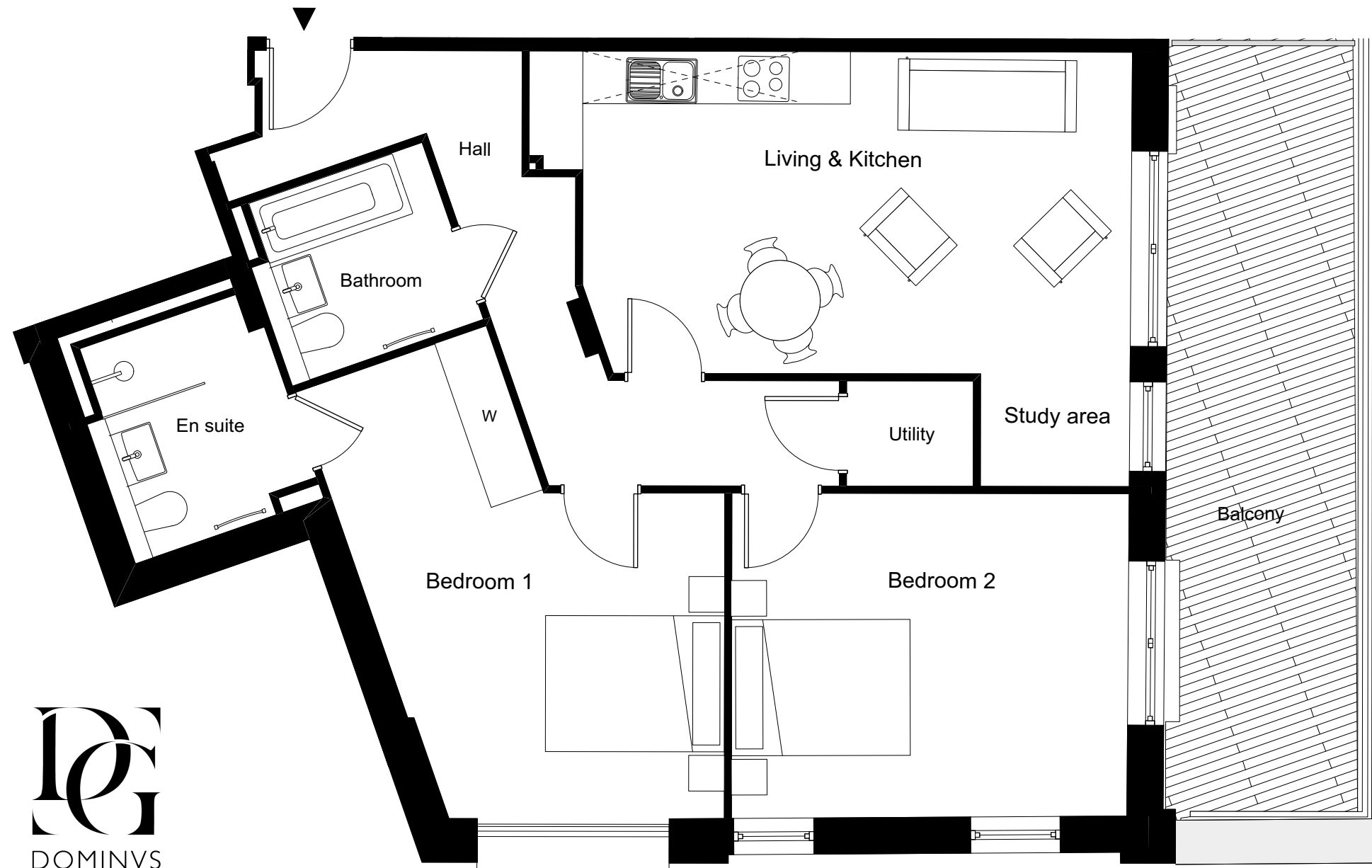


ONE FOX LANE  
PALMERS GREEN, LONDON



A DEVELOPMENT BY  
**DOMINVS GROUP**  
RESIDENTIAL

**2 BEDROOM APARTMENT 3.8 / 49**

Total Gross Internal Area = 84.2m<sup>2</sup> / 906 sq. ft

Bedroom 1 = 5.8 x 4.3 m / 19 x 14.1 ft

Bedroom 2 = 4.5 x 3.6 m / 14.8 x 11.8 ft

Living/Kitchen = 6.8 x 4.7 m / 22.3 x 15.4 ft

**Key**  
Cupd = Cupboard  
W = Wardrobe  
U = Utility cupboard

**Note**  
Measurements are the maximum room dimensions.  
Floor layouts are subject to change at any time  
These drawings are for Marketing purposes only