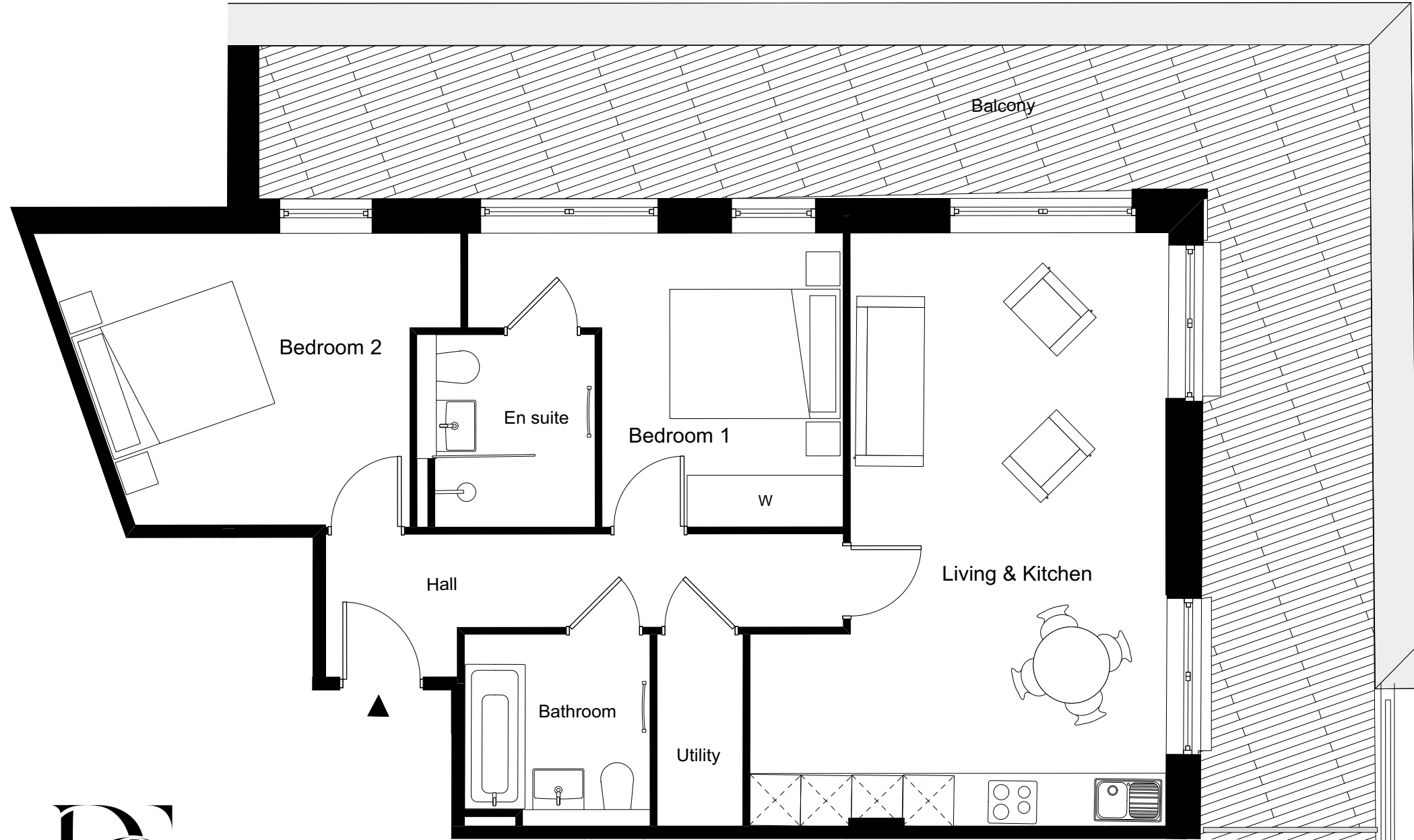


ONE FOX LANE  
PALMERS GREEN, LONDON



**2 BEDROOM APARTMENT 3.7 / 48**

Total Gross Internal Area = 76.1m<sup>2</sup> / 819 sq. ft

Bedroom 1 = 4.4 x 3.5 m / 14.4 x 11.5 ft

Bedroom 2 = 5.0 x 3.4 m / 16.4 x 11.2 ft

Living/Kitchen = 7.0 x 4.9 m / 23 x 16.1 ft

**Key**

Cupd = Cupboard

W = Wardrobe

U = Utility cupboard

**Note**

Measurements are the maximum room dimensions.  
Floor layouts are subject to change at any time  
These drawings are for Marketing purposes only



DOMINVS  
GROUP

A DEVELOPMENT BY  
DOMINVS GROUP  
RESIDENTIAL