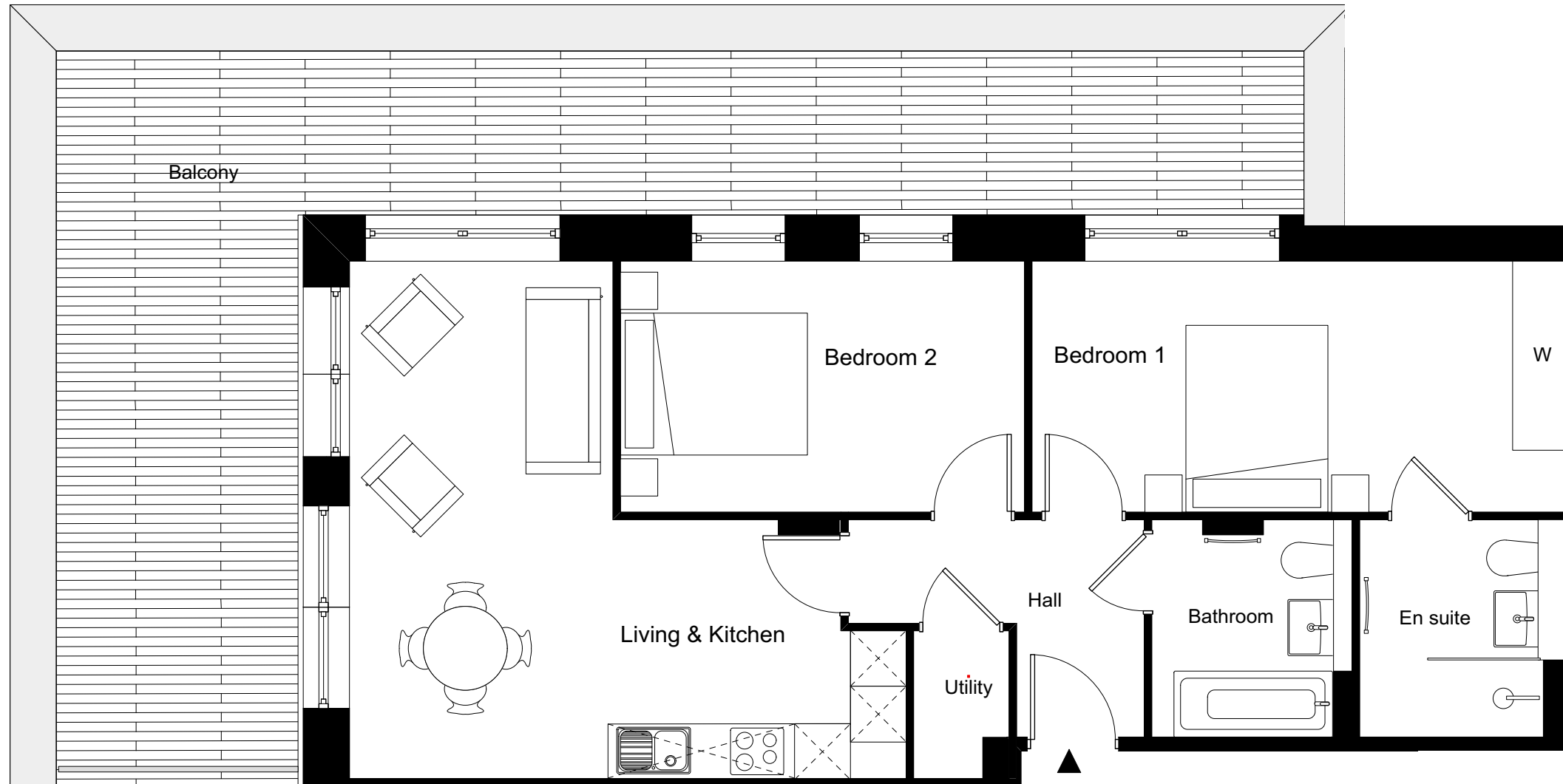


ONE FOX LANE  
PALMERS GREEN, LONDON



2 BEDROOM APARTMENT 3.5 / 46

Total Gross Internal Area = 70m<sup>2</sup> / 753 sq. ft

Bedroom 1 = 5.7 x 2.7 m / 18.7 x 8.9 ft

Bedroom 2 = 4.4 x 2.7 m / 14.4 x 8.9 ft

Living/Kitchen = 6.0 x 5.6 m / 19.7 x 18.4 ft

Key

Cupd = Cupboard

W = Wardrobe

U = Utility cupboard

Note

Measurements are the maximum room dimensions.  
Floor layouts are subject to change at any time  
These drawings are for Marketing purposes only



DOMINVS  
GROUP

A DEVELOPMENT BY  
DOMINVS GROUP  
RESIDENTIAL