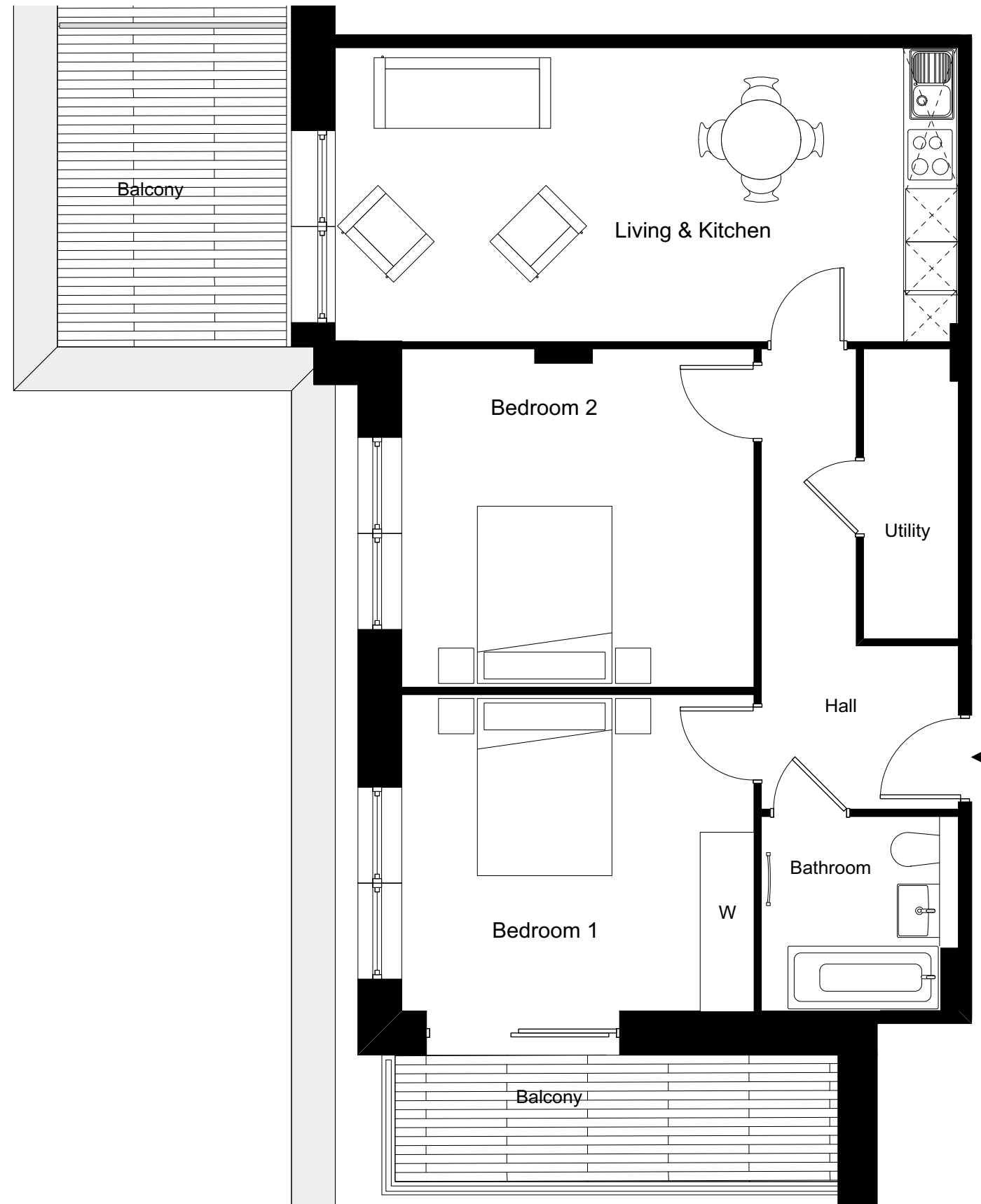


ONE FOX LANE  
PALMERS GREEN, LONDON



DOMINVS  
GROUP

A DEVELOPMENT BY  
DOMINVS GROUP  
RESIDENTIAL



**2 BEDROOM APARTMENT 3.3 / 45**

Total Gross Internal Area = 71.3m<sup>2</sup> / 767 sq. ft

Bedroom 1 = 3.9 x 3.6 m / 12.8 x 11.8 ft

Bedroom 2 = 4.0 x 3.8 m / 13.1 x 12.5 ft

Living/Kitchen = 7.1 x 3.3 m / 23.3 x 10.8 ft

**Key**  
Cupd = Cupboard  
W = Wardrobe  
U = Utility cupboard

Note  
Measurements are the maximum room dimensions.  
Floor layouts are subject to change at any time  
These drawings are for Marketing purposes only