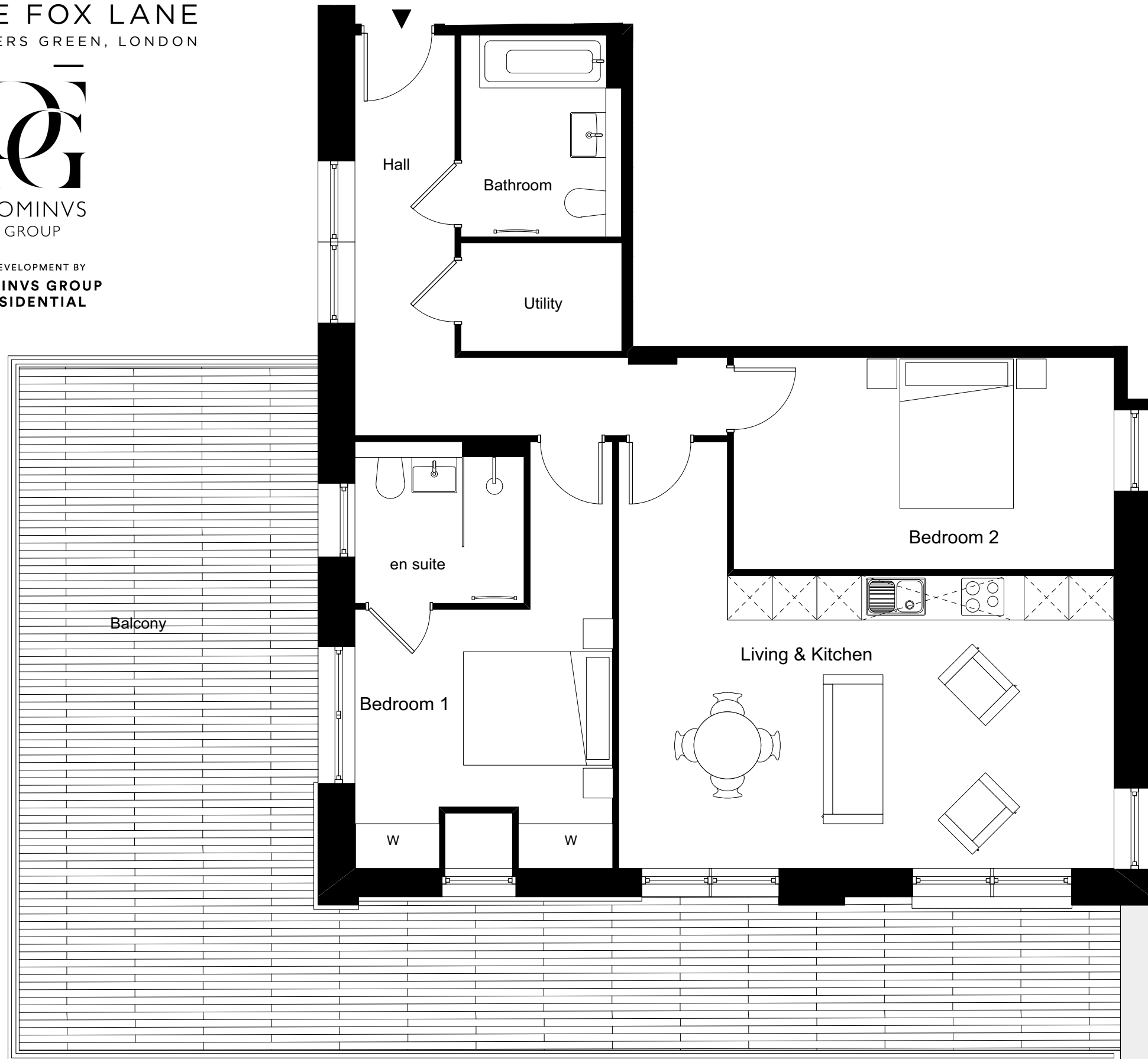


ONE FOX LANE  
PALMERS GREEN, LONDON



DOMINVS  
GROUP

A DEVELOPMENT BY  
DOMINVS GROUP  
RESIDENTIAL



**2 BEDROOM APARTMENT 3.1 / 44**

Total Gross Internal Area = 84.2m<sup>2</sup> / 906.3 sq. ft

Bedroom 1 = 3.5 x 3.5 m / 11.5 x 11.5 ft

Bedroom 2 = 5.1 x 2.8 m / 16.7 x 9.2 ft

Living/Kitchen = 6.7 x 3.9 m / 22 x 12.8 ft

**Key**

Cupd = Cupboard

W = Wardrobe

U = Utility cupboard

**Note**

Measurements are the maximum room dimensions.  
Floor layouts are subject to change at any time  
These drawings are for Marketing purposes only