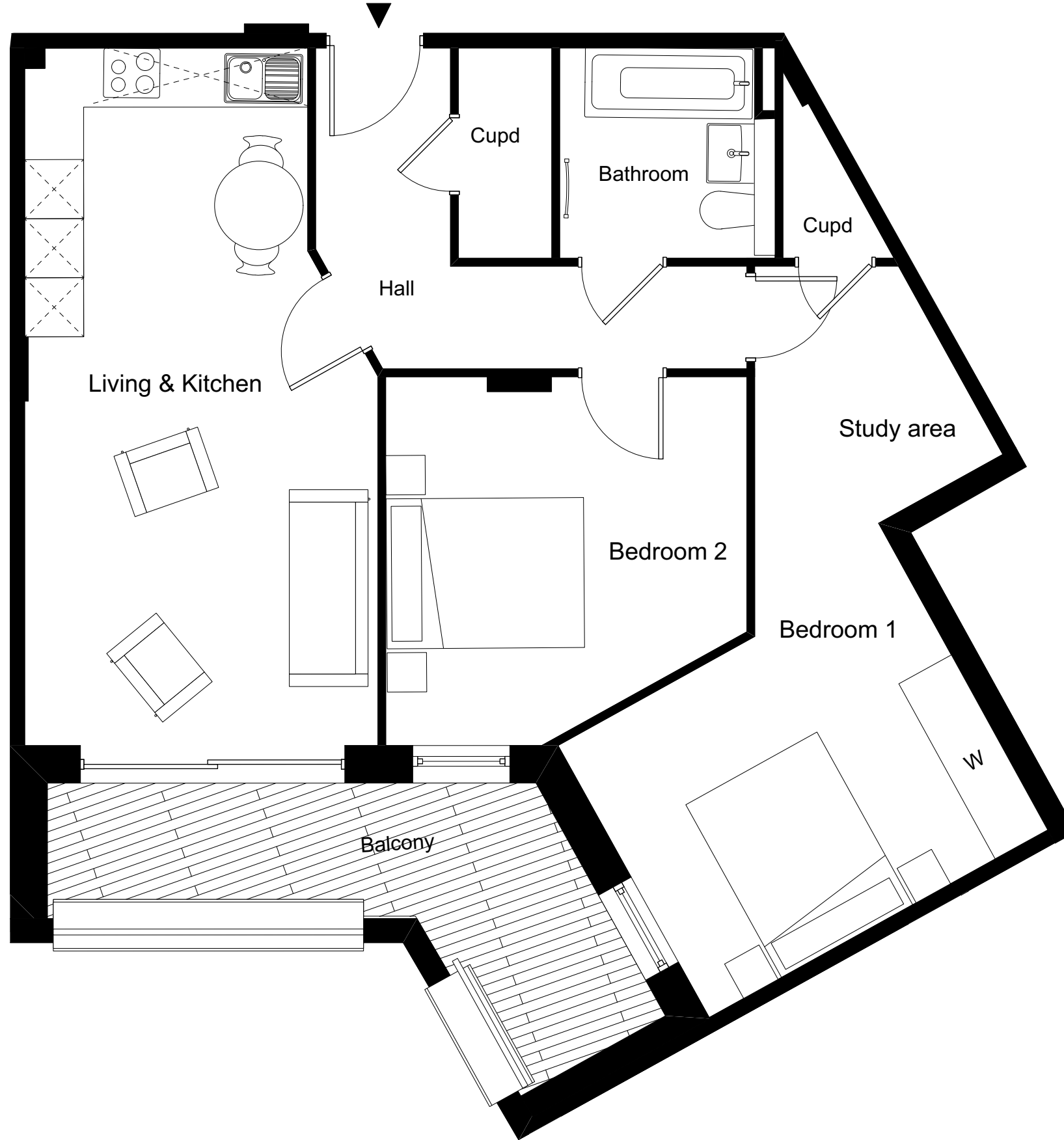


ONE FOX LANE
PALMERS GREEN, LONDON



2 BEDROOM APARTMENT 2.16 / 39

Total Gross Internal Area = 72.4m² / 779 sq. ft

Bedroom 1 = 3.9 x 3.2 m / 12.8 x 10.5 ft

Bedroom 2 = 3.7 x 3.7 m / 12.1 x 12.1 ft

Living/Kitchen = 7.1 x 3.6 m / 23.3 x 11.8 ft

Key

Cupd = Cupboard

W = Wardrobe

U = Utility cupboard

Note

Measurements are the maximum room dimensions.
Floor layouts are subject to change at any time
These drawings are for Marketing purposes only



DOMINVS
GROUP

A DEVELOPMENT BY
DOMINVS GROUP
RESIDENTIAL