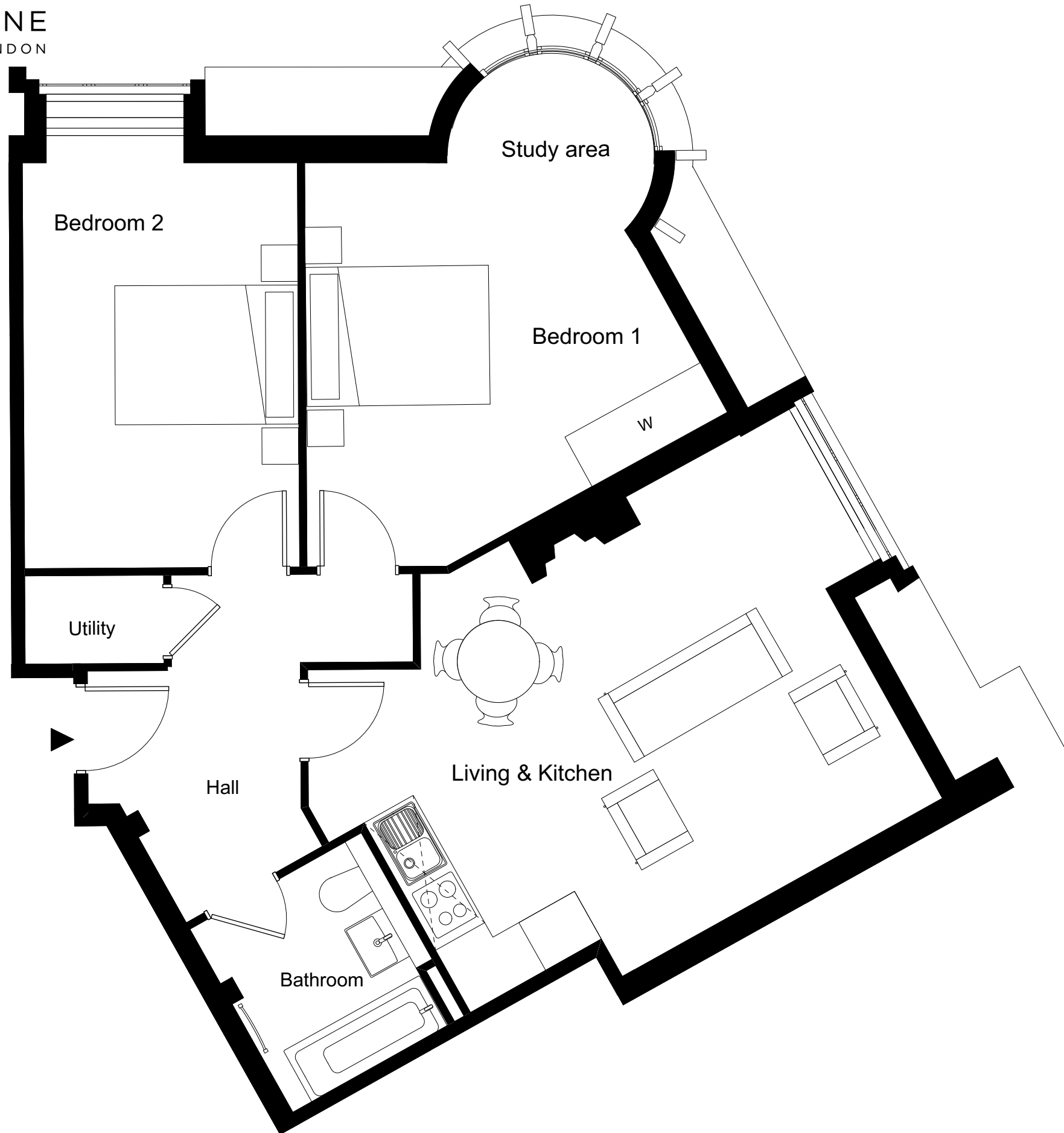


ONE FOX LANE
PALMERS GREEN, LONDON



2 BEDROOM APARTMENT 2.18 / 35

Total Gross Internal Area = 75m² / 807 sq. ft

Bedroom 1 = 5.0 x 5.6 m / 16.4 x 18.4 ft

Bedroom 2 = 4.7 x 3.0 m / 15.4 x 9.8 ft

Living/Kitchen = 6.2 x 4.6 m / 20.3 x 15 ft

Key

Cupd = Cupboard

W = Wardrobe

U = Utility cupboard

Note

Measurements are the maximum room dimensions.
Floor layouts are subject to change at any time
These drawings are for Marketing purposes only



DOMINVS
GROUP

A DEVELOPMENT BY
DOMINVS GROUP
RESIDENTIAL