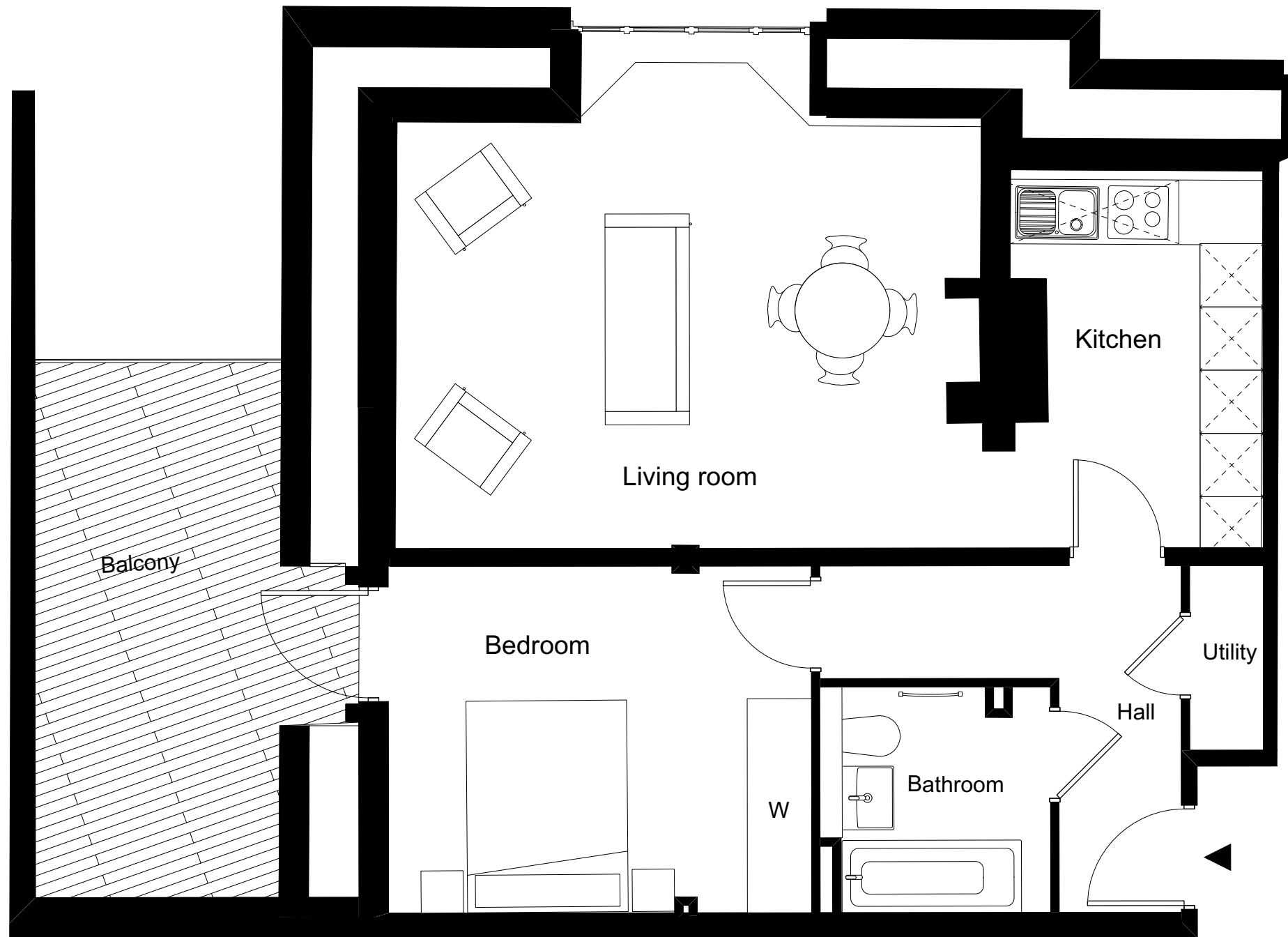


ONE FOX LANE  
PALMERS GREEN, LONDON



1 BEDROOM APARTMENT 2.17 / 34

Total Gross Internal Area = 60.3m<sup>2</sup> / 649 sq. ft

Bedroom = 4.0 x 3.2 m / 13.1 x 10.5 ft

Living room = 5.5 x 4.6m / 18 x 15 ft

Kitchen = 3.6 x 2.4 m / 11.8 x 7.9 ft

Key  
Cupd = Cupboard  
W = Wardrobe  
U = Utility cupboard

Note  
Measurements are the maximum room dimensions.  
Floor layouts are subject to change at any time  
These drawings are for Marketing purposes only



DOMINVS  
GROUP

A DEVELOPMENT BY  
DOMINVS GROUP  
RESIDENTIAL