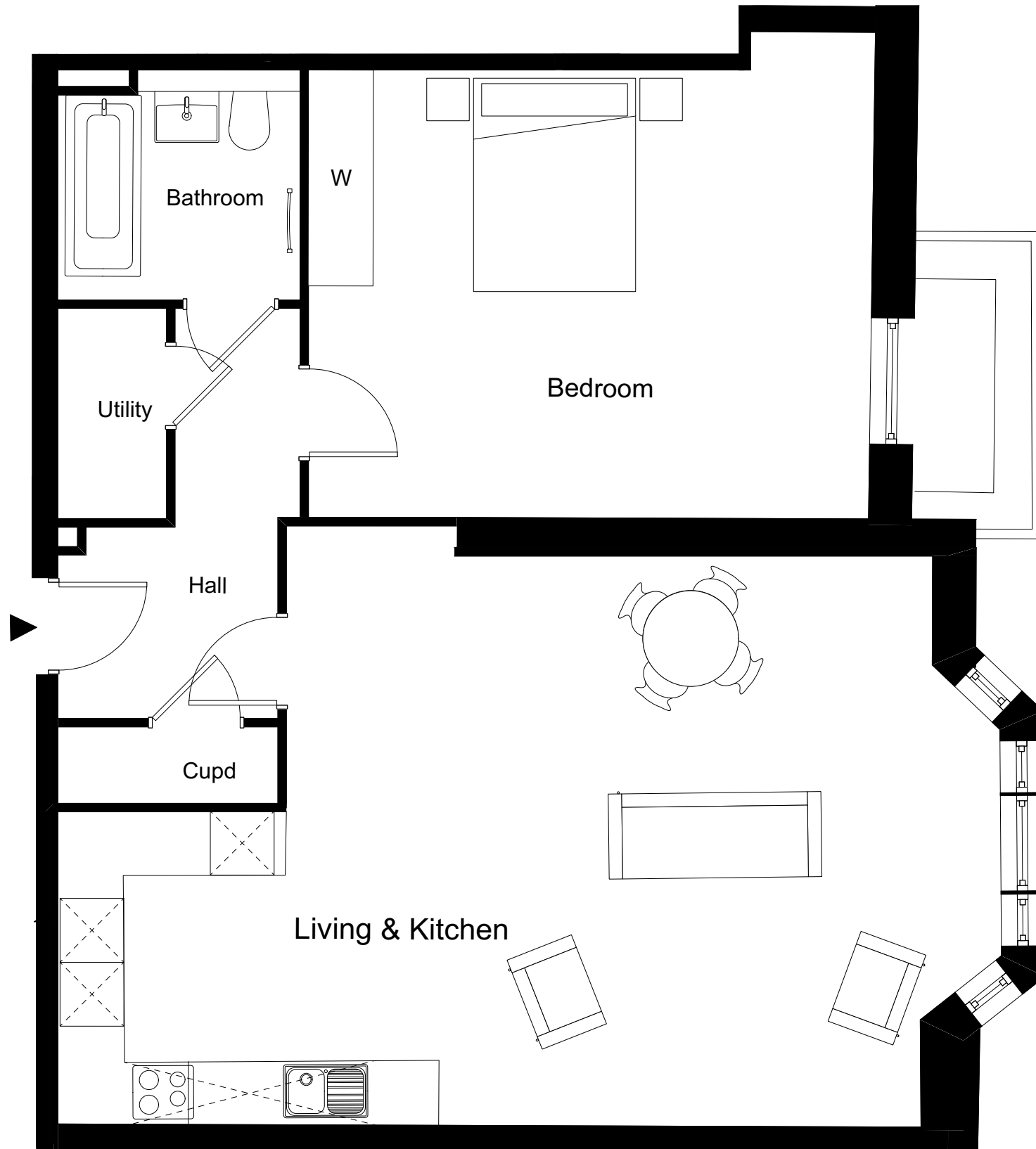


ONE FOX LANE
PALMERS GREEN, LONDON



DOMINVS
GROUP

A DEVELOPMENT BY
DOMINVS GROUP
RESIDENTIAL



1 BEDROOM APARTMENT 1.17 / 15

Total Gross Internal Area = 81 m² / 872 sq. ft

Bedroom = 5.2 x 4.2 m / 17 x 13.8 ft

Living/Kitchen = 6.1 x 5.3 m / 20 x 17.4 ft

Key

Cupd = Cupboard

W = Wardrobe

U = Utility cupboard

Note

Measurements are the maximum room dimensions.
Floor layouts are subject to change at any time
These drawings are for Marketing purposes only