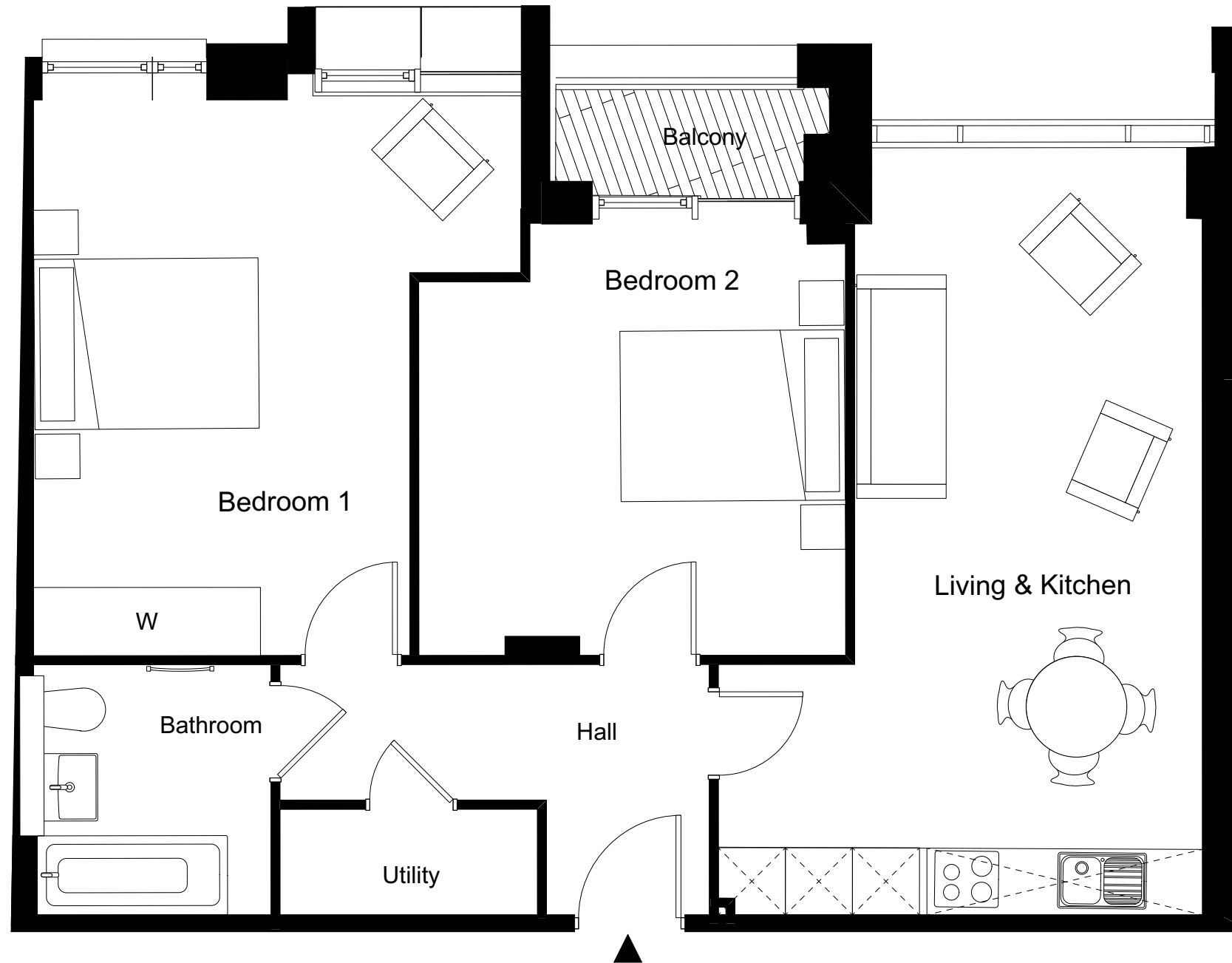


ONE FOX LANE
PALMERS GREEN, LONDON



2 BEDROOM APARTMENT 1.14 / 13

Total Gross Internal Area = 71.5m² / 770 sq. ft

Bedroom 1 = 4.4 x 4.9 m / 14.4 x 16 ft

Bedroom 2 = 3.8 x 3.9 m / 12.5 x 12.8 ft

Living/Kitchen = 3.1 x 6.9 m / 10.2 x 22.6 ft

Key

Cupd = Cupboard

W = Wardrobe

U = Utility cupboard

Note

Measurements are the maximum room dimensions.
Floor layouts are subject to change at any time
These drawings are for Marketing purposes only



DOMINVS
GROUP

A DEVELOPMENT BY
DOMINVS GROUP
RESIDENTIAL